

Summer Camp at the B&O Railroad Museum



A Social Narrative for Teens

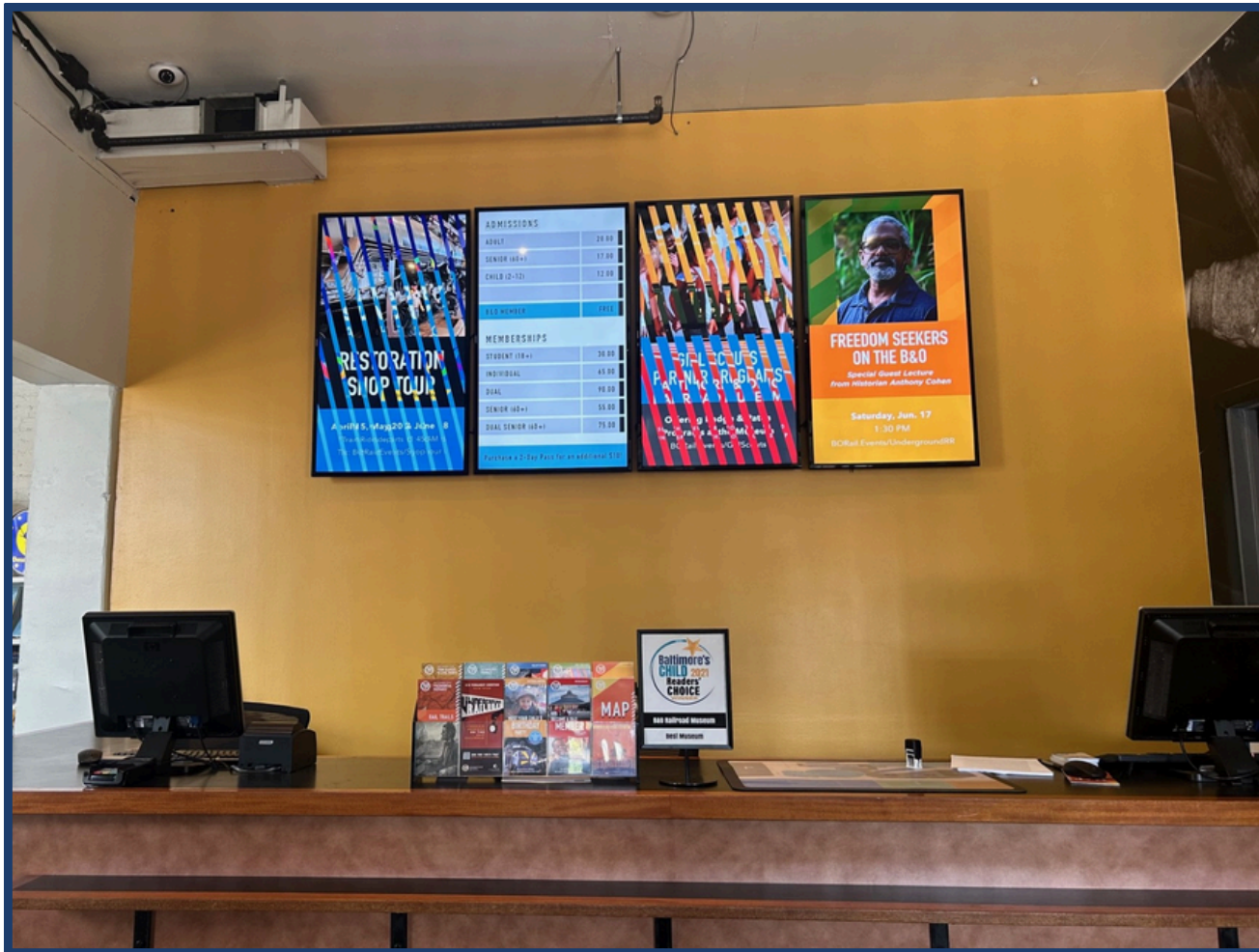




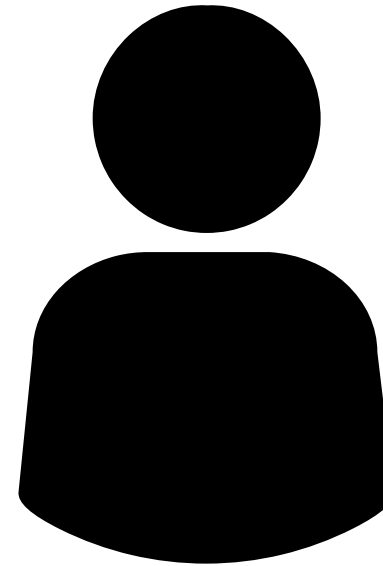
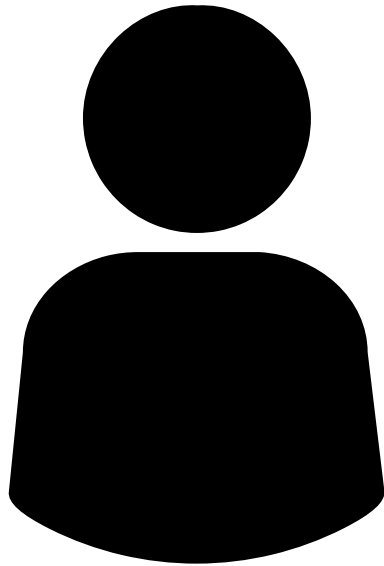
You will be going to summer camp at the B&O Railroad Museum! There will a lot of activities like science experiments, art projects, and tours.



When you arrive to camp in the morning, enter through the big gate to park. Follow the signs to the museum entrance.



Inside will be a camp staff member to welcome you and help you sign-in each day.



Before camp you will receive a copy with
counselor photos and names.

Your counselors will have the schedule for the
whole day. If you have any questions or need
help, just ask!



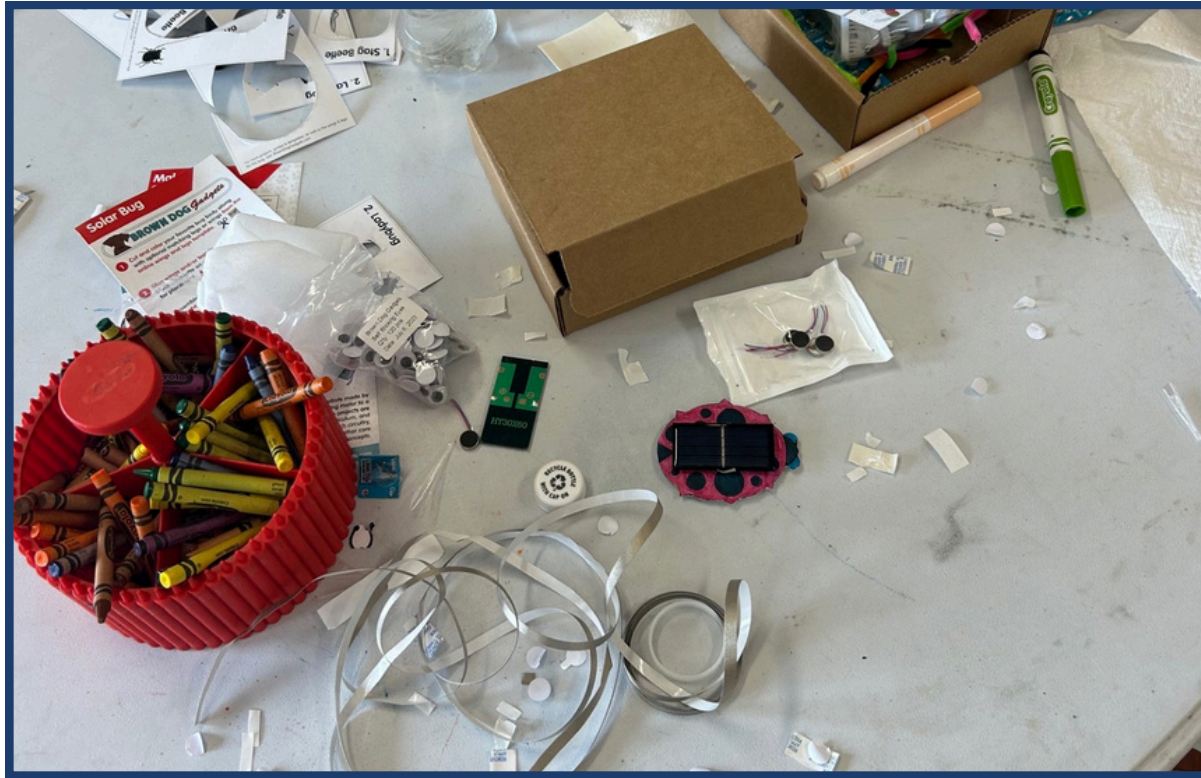
Sometimes the museum might be busy with other visitors and groups. It might be loud, if you need a break or headphones tell your counselor.



At 9am counselors will take all campers to the Education Station to start the day.



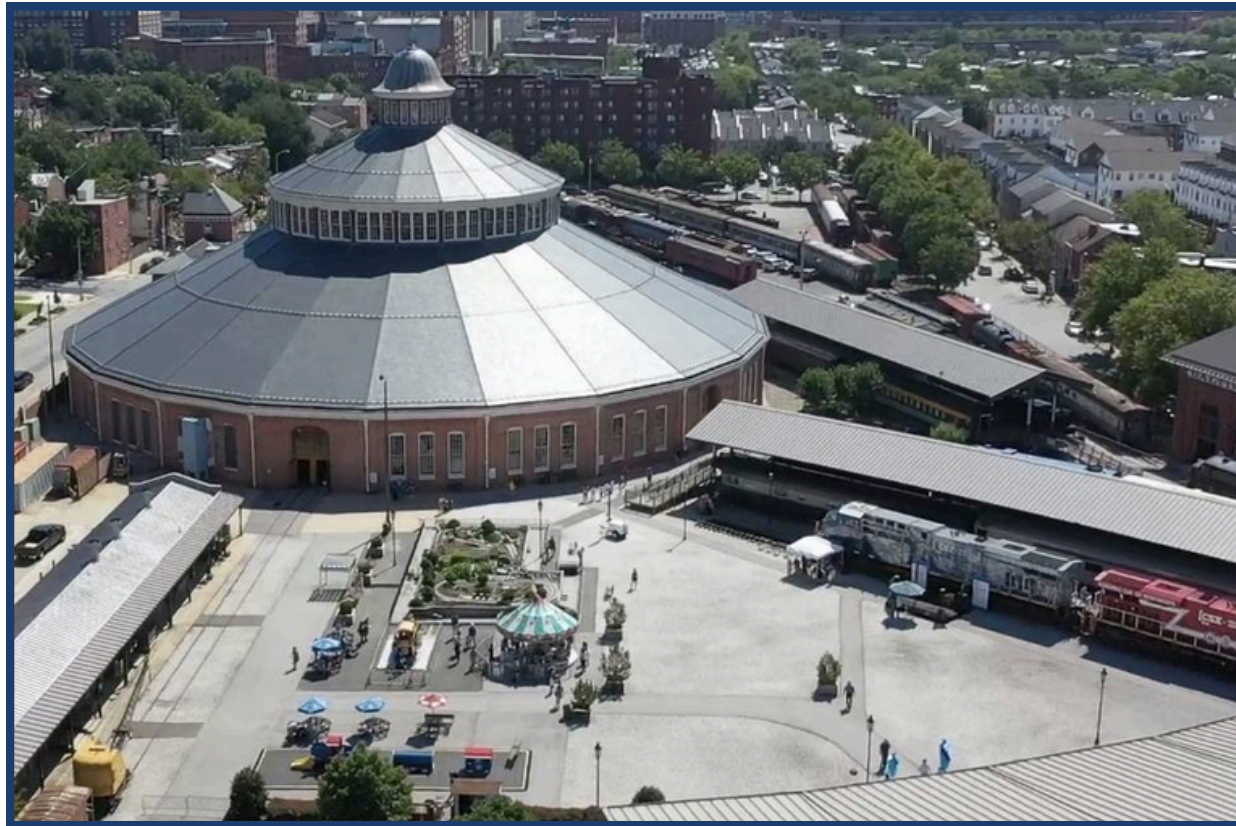
After morning meeting you will go to the Roundhouse for a tour of the museum.



Next, we will do a workshop! Workshops will let us explore science, engineering, and technology.



Lunch will be outside. If it is raining lunch will be in the Education Station.



After lunch there will be break time. Listen to your counselor's directions about where you can go and what activities are available.



When the tour is over there will be an art project.
It is okay if you are not a perfect artist, everyone
is learning!



At the end of the day you will have some quiet
time.



Your adult will pick you up at the front of the museum after camp is over for the day.



On Friday the schedule will be different. Your counselor can tell you about the changes.